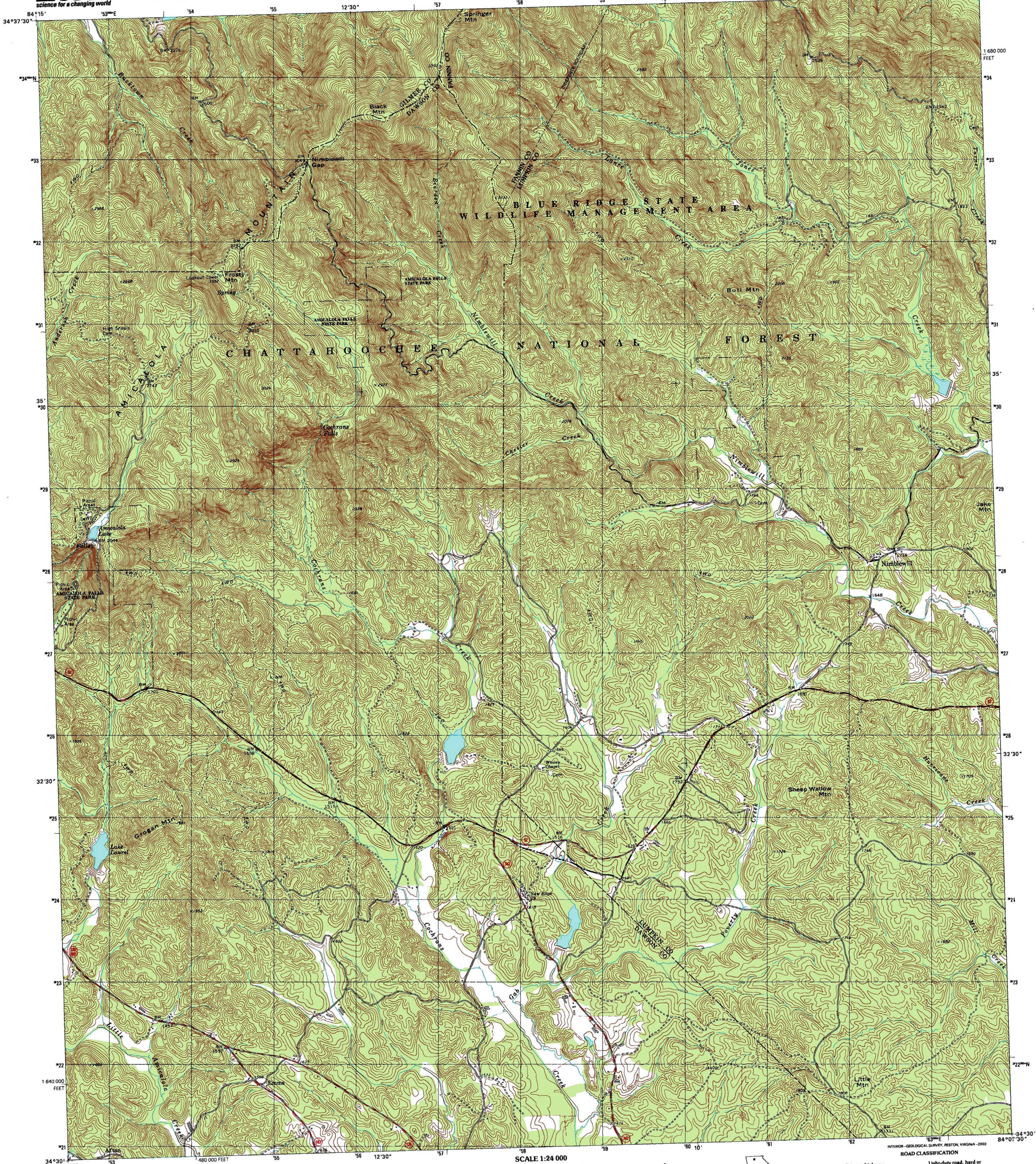


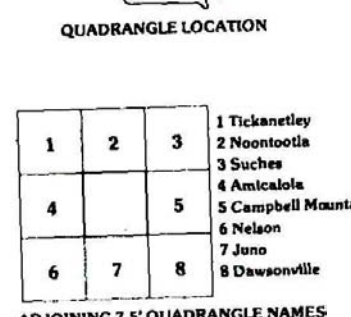
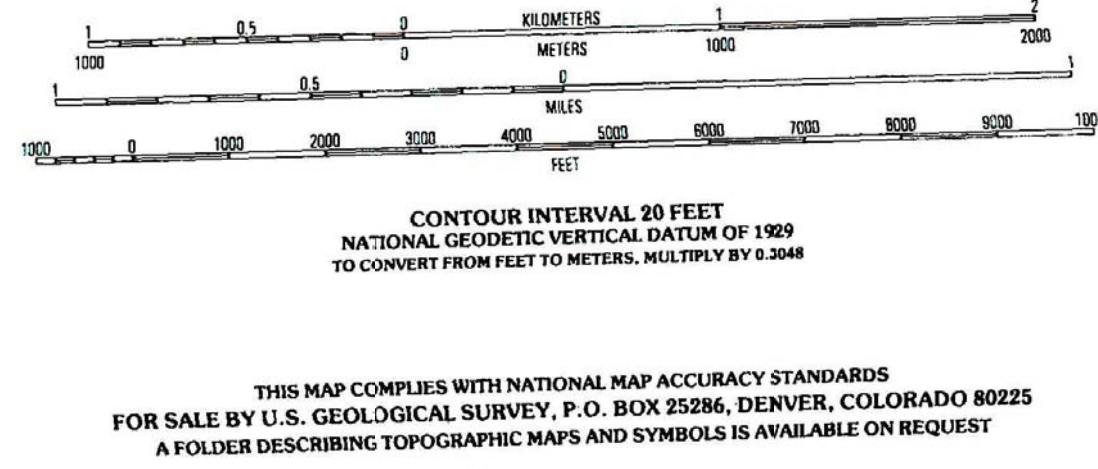
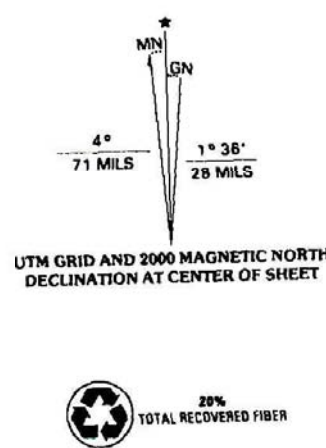


U.S. DEPARTMENT OF THE INTERIOR  
U.S. GEOLOGICAL SURVEY

NIMBLEWILL QUADRANGLE  
GEORGIA  
7.5-MINUTE SERIES (TOPOGRAPHIC)



Produced by the United States Geological Survey  
Derived from imagery taken 1966 and other sources. Photorevised using imagery taken 1997; no major culture or drainage changes observed. Survey control current as of 1971  
Boundaries revised 1999  
North American Datum of 1927 (NAD 27). Projection and 10 000-foot ticks: Georgia coordinate system, west zone (transverse Mercator)  
1000-meter Universal Transverse Mercator grid, zone 16  
North American Datum of 1983 (NAD 83) is shown by dashed corner ticks. The values of the shift between NAD 27 and NAD 83 for 7.5-minute intersections are obtainable from National Geodetic Survey NADCON software  
There may be private inholdings within the boundaries of the National or State reservations shown on this map



ROAD CLASSIFICATION  
Primary highway  
hard surface .....  
Secondary highway  
hard surface .....  
Light-duty road, hard or  
improved surface .....  
Unimproved road .....  
Interstate Route  
U.S. Route  
State Route

NIMBLEWILL, GA  
1997  
NIMA 4153 II SW-SERIES V845

